



# FUTURESPORT @QMGS A COMMUNITY LEGACY

Queen Mary's Grammar School  
Walsall





# MESSAGE FROM OUR CAMPAIGN CHAIRMAN

Birmingham and the West Midlands is a region of makers, of kind hearts and never-quiters.

With that in mind we have developed an ambitious 3-phased development plan which will result in major improvements to our sports facilities, a core element of the holistic education we provide at the School.

Our plans are exciting and will provide the much-needed space for the people of Walsall and beyond who love sport to allow their considerable talents to grow and flourish.

At QMGS we are unafraid to do things differently, to strive for new benchmarks in creativity, inclusivity, and sustainability and to leave an indelible mark on our region.

FutureSport@QMGS will address this through:

## Performance

We will directly improve our sporting performance as a direct result of better facilities. Over the next 10 years we are aiming to grow both county and national players across all sports.

## Wellbeing

Through greater participation we can help more of our pupils and their families as well as our community in Walsall develop the wellbeing habits that increase resilience and promote feeling good.

## Community

We will further deepen our links with our community widening access to sports facilities for those who need it most.

Thank you for joining us.

**John Waters**  
Campaign Chairman

## WE ARE PROUD OF OUR SPORTING ACHIEVEMENTS AT QMGS

We consistently compete against leading independent schools and colleges in rugby, hockey, and cricket. We have featured in The Cricketer magazine "Top 100" Schools Guide for the last five years.

Our achievements though, are despite our current facilities rather than because of them. If we want to excel and develop further at sport, increase participation, and support the Walsall community more we need to address these issues now.

In addition to our School challenges, Walsall and the wider Black Country suffers from a dearth of playing spaces and community centres.

**We can provide a solution by making our School a community and sporting facility for all.**



## CRICKET

- We have made great strides with cricket in recent years, but the condition of the squares and outfield remains poor.
- We desperately need drainage and levelling to help irrigate and prepare our wickets.
- Currently, too many of our senior home games are played away.

*"Cricket at QMGS has seen an increase in participation and improved performance in recent years. We are now able to field 2, if not 3, strong teams per year. This project would build upon this hard work and effort and make us even better."*



**Harpreet Kalia**  
Senior Cricket Captain

## HOCKEY

- We have no suitable on-site facilities for competitive hockey and currently rent pitches locally or play our fixtures away.
- This short-term solution is costly in terms of hire and transport and eats into the time our students can play and teachers can coach.

*"This project would be a complete game changer for QMGS. It is clear from extra-curricular participation that students and staff are passionate and keen on PE/sport. However, the current facilities are hindering that passion. The ability to host hockey fixtures along with the other impressive plans would revolutionise sport at QMGS."*



**Dilraj Sohal**  
Senior Hockey Captain

## RUGBY

- Anyone who has either played on our fields or cheered our teams on from the side-lines will be aware that our pitches are frequently waterlogged and become unusable at key times of the season.

*"We have had to cancel several training sessions and fixtures due to the poor drainage of the playing fields this year. This is such a shame as the numbers of students that attend training/matches is extremely impressive. This project would make cancellations a thing of the past. It would radically improve the performance and participation of all our rugby teams."*



**Jake Labram**  
Senior Rugby Captain



# FUTURESPORT @QMGS

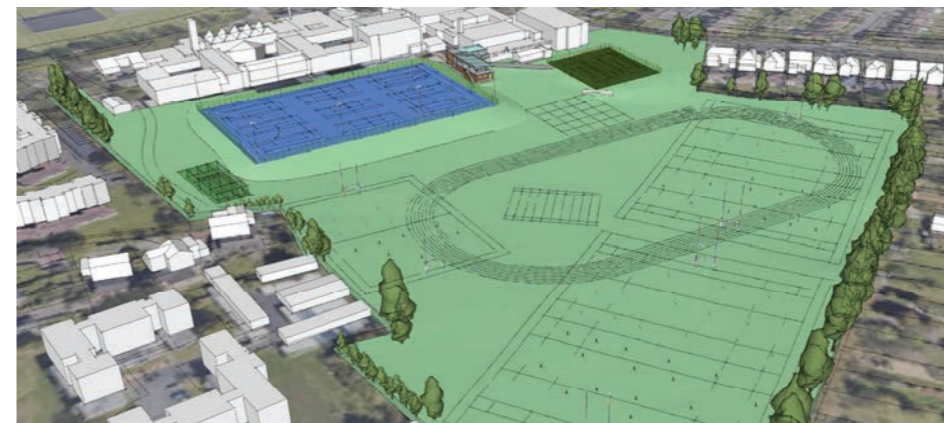
## PROJECT AREA

Our last significant capital campaign successfully raised over £1 million for the Collier Sixth Form Centre, which opened in 2012. Since then, we have been consistently investing in our facilities. However, we now need to ask our parents, Old Marians, and wider community to support us in this important project not just for the School but for Walsall and surrounding areas.

## WHAT WE NEED

### Project Cost

1 A 2G AstroTurf pitch for hockey, tennis, and 5-a-side football; an all-season, all-weather pitch so that the facilities can be used by the maximum amount of people	£816,557
2 Site drainage works across the whole field and re-setting of the cricket square to make the current available grass pitches fit for purpose	£250,000
3 Extend our pavilion – with access for external sports clubs, to build our links to our local sporting community and create revenue for the School to reinvest into sport	£715,333
<b>TOTAL COST</b>	<b>£1,781,890</b>



## PROJECT PLANS

- Above: Pavilion and viewing gallery
- Left: Aerial view of facilities
- Below: Pavilion view from artificial grass pitch
- Bottom left: Pavilion view from side
- Bottom right: Artificial grass pitch for hockey and tennis



# MAKING IT HAPPEN

To raise our target of £1.8 million, we need to achieve gifts within the Scale of Giving below – a simple financial model of how our campaign target can be achieved.

## SCALE OF GIVING

Gifts Required	Annual Gift £	Total 5-Year Gift £	Total £	Cumulative Total £
1	30,000	150,000	150,000	150,000
2	24,000	120,000	240,000	390,000
10	10,000	50,000	500,000	890,000
10	4,000	20,000	200,000	1,090,000
25	2,000	10,000	250,000	1,340,000
30	1,000	5,000	150,000	1,490,000
50	600	3,000	150,000	1,640,000
100	200	1,000	100,000	1,740,000
Many smaller gifts			60,000	1,800,000
<b>228+ gifts</b>				<b>£1,800,000</b>

## GIFT AID

As an exempt charity, we can claim back the basic rate of tax you have paid on your gift, at no extra cost to you. This means that for every £1 you give, the School can claim an extra 25p in Gift Aid from the Inland Revenue.

## TAX RELIEF FOR HIGHER RATE TAXPAYERS

If you are a higher rate taxpayer, you may be entitled to claim tax relief (depending on your personal circumstance) on the difference between the basic rate of tax and the higher rates of tax.

Please contact your tax or financial advisor for further information regarding your personal circumstances.



**As a parent at the School, I am proud to be involved in this campaign which will improve the sports facilities for the students and our local community now and for generations to come. Please join us in this important endeavour.**

**Deborah Bannister**  
Parent and Walsall Campaign Chair



# NAMING OPPORTUNITIES

Annual Gift £	Total 5-Year Gift £	Naming Opportunities
30,000	150,000	Naming of the Pavilion or new AstroTurf pitch Naming of School cricket/rugby/hockey/football trophy
20,000	100,000	Naming of cricket or rugby pitch
10,000	50,000	Naming of a room in the Pavilion Name on Pavilion Honours Board (Gold)
5,000	20,000	Name on Pavilion Honours Board (Silver)
2,000	10,000	Name on Pavilion Honours Board (Bronze)

All great schools throughout the centuries have grown and flourished through the philanthropy of individuals who care about their future. A Naming Opportunity demonstrates publicly the generosity of individuals who care about the long-term aims of the School.

However, every gift to the campaign will be acknowledged and gratefully received regardless of amount. The Mercian Trust and its board of Governors will endorse each Naming Opportunity to ensure that it is appropriate to the ethos and culture of QMGS.



# THANK YOU

At Queen Mary's Grammar School, we know we have a School that delivers excellence in sport. However, it is against the odds. We have the potential to do and achieve so much more.

We have a unique opportunity now to improve our campus by developing sporting facilities on a par with the best facilities in the Midlands, maximising our achievement in competitive sport and wider participation in sport throughout our student body and local community.

We also have a once in a lifetime opportunity to make a huge impact on the lives of people in Walsall by providing them with the sporting and physical activity space they so desperately need.

Please join us now in making a real difference for our whole community.

*Quas dederis solas semper habebis opes;* it is what you give that you will keep as eternal riches.

**Richard Langton**  
Headmaster

---

## SUPPORTERS

Beacon Hockey Club

Walsall Cricket Club

Walsall Tennis Club

Walsall Rugby Club

Staffordshire Schools Rugby

Staffordshire Cricket

Handsworth Rugby Union Football Club

Queen Mary's High School

Mayfield Preparatory School

Primary school partners

